

# Semanteer Enterprise Search

connecting all dots in your organization



Do your employees spend a lot of time searching for important information in the intranet of your organization? Do you need to make information from emails, web pages, databases, wikis, network shares, and enterprise information systems searchable from a single place?

Semanteer provides you with the solution - easy to set up and immediately usable.

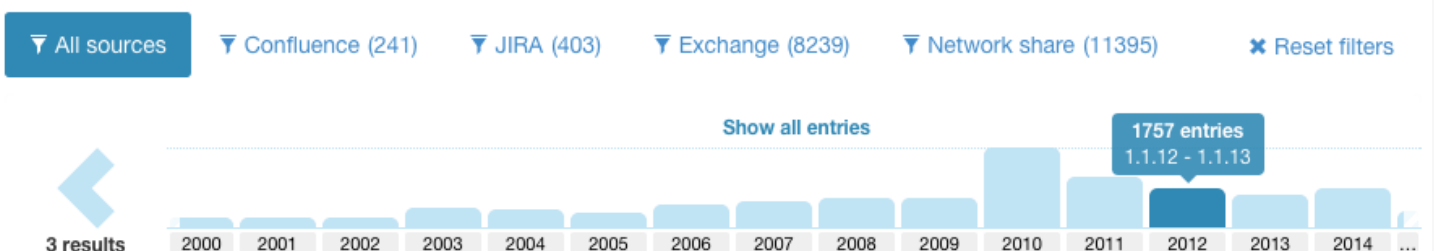
## Collection & Extraction

- Easy integration of data from popular enterprise information systems through standard interfaces and connectors
- New content is added automatically and promptly to the search index (through delta updates)
- Language-sensitive analysis and indexing (the basic configuration supports English, German, French, and Italian, and all common document formats)
- Semantic analysis of content and extraction of metadata, automatic mapping to projects, employees, clients, etc.

## Highlights

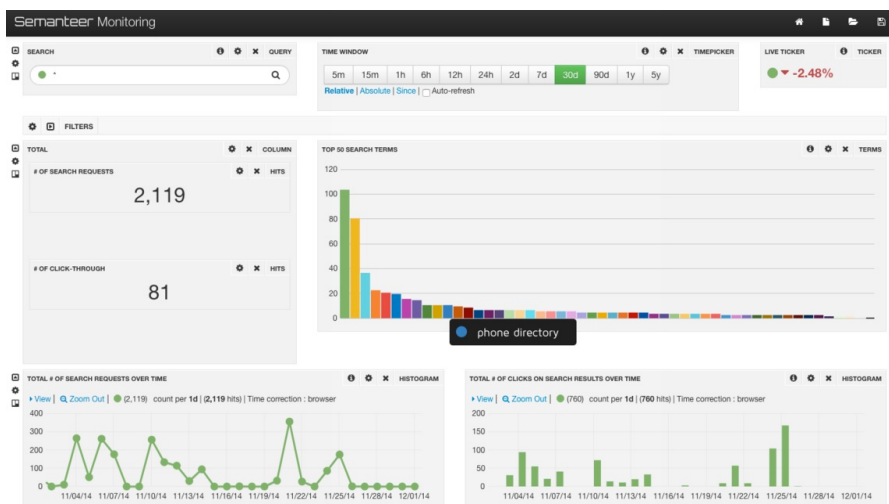
- Scalable search solution tailored to meet the requirements of your company
- Fault-tolerant and highly sophisticated; give your employees an easy and fast route to what they are looking for
- Easy to set up your company's data sources for searching
- Searchable content dependent on your employees' access rights

**Smart enterprise search over different company sources such as network shares, wikis, email repositories etc; configurable facets and filters and an interactive timeline**



## Search & Monitoring

- Intelligent and fault-tolerant auto-complete functionality including suggestions of results from different company systems
- Configurable facets and dynamic filters for sources, categories and attributes such as author, date, type and more. One of the highlights is the interactive timeline filter
- Configuration of the search results page: definition of fields, presentation, and boosting weights
- Monitoring of search behavior and analytics such as most searched-for topics, search terms without results, etc.



## Technology

- **Semanteer** - a Solr-based search platform; bundles proven open-source components for search and recommendations
- REST API for indexing, search and monitoring

**Supported systems:** databases such as Microsoft SQL Server, Oracle, Sybase, Postgresql, MySQL, etc.; local and company network shares; cloud systems (such as Dropbox, Google Drive etc.); email repositories (Microsoft Exchange Server, IMAP or POP3); RSS / Atom feeds; wikis; common content-, record-, document- and enterprise-management systems (Atlassian, Alfresco, Day, EMC, HP, IBM, Magnolia, OpenCms, OpenText, Oracle, SAP, SharePoint, TYPO3 and more).

**Supported connectors:** JDBC, SAMBA, DFS, HDFS, Java Content Repository API, IMAP, POP3, CMIS etc.

## Semanteer search platform



### A complete search platform

All the way from collecting data, to semantic analysis and natural language processing



### Full control

A single "cockpit" to configure, manage, and monitor your entire search infrastructure.



### Deployed any way you like

On-premise for maximum security, on the cloud for maximum scalability, or hosted for maximum convenience



### Tailored to fit your needs

Start from one of our standardized solutions, or from scratch, to arrive at exactly what you need.



### Based on open source

Impressive sets of features, no lock-in, all bundled, tested and maintained by us



### Experienced team

Decades of experience in research and industry, distilled into our products and services.

CONTACT US FOR MORE INFORMATION



CONTEXITY

We collect, extract, analyse, enhance and present your information

Tel: +41 78 6116542

Email: [info@contexity.ch](mailto:info@contexity.ch)

Web: [www.contexity.ch](http://www.contexity.ch)